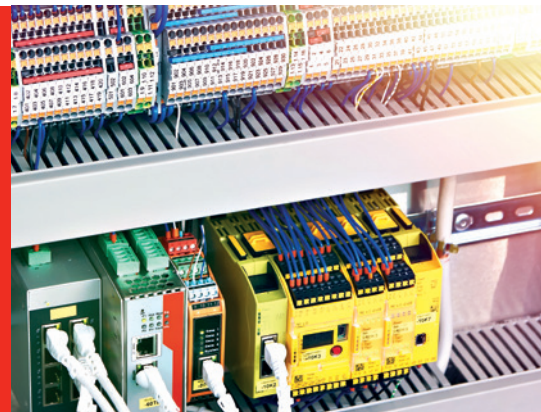
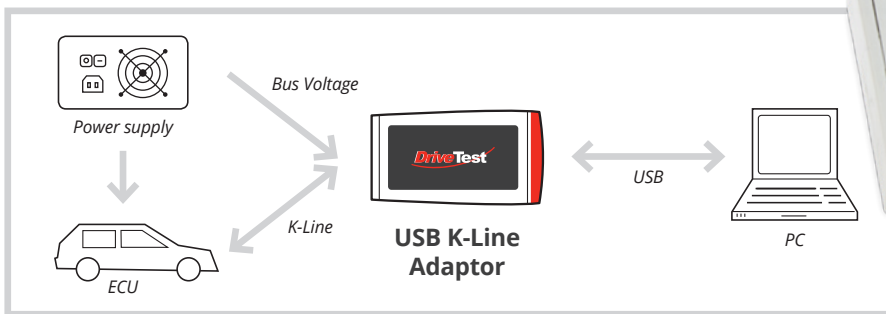


USB K-Line Adaptor



The USB K-Line Adaptor is a device that makes K-Line available as a regular COM Port. It connects to the PC via USB 2.0.



Key features

- One wire K-Line support
- Wide K-Line bus operating voltage: 4.5 V to 36 V
- K-Line bus operating voltage level must be supplied externally
- Bus powered USB device
- Detachable DIN Rail retainer

Supported host platforms

- Windows, macOS, Linux
- Adaptor uses virtual COM Port by FTDI
- Windows 10 installs driver automatically
- Compatible with any software that uses K-Line over COM port

What's included?

- USB K-Line Adaptor
- USB A to micro USB cable (1 m)
- Phoenix contact plug
- DIN rail retainer
- Manual

Technical specifications

K-Line bus voltage:	4.5 V–36 V DC
Connector:	Phoenix contact PTSM 0,5/3-P-2,5
Driver:	Virtual COM port driver by FTDI for Windows 7–10, macOS, Linux
USB port:	Micro USB at adapter, USB A at PC
LEDs:	Power, RX, TX
Dimensions:	78 x 45 x 19 mm (excluding retainer)
Weight:	34 g



About us

Drive Test GmbH develops and produces test systems, control units and force sensors for the automotive industry for more than 20 years. Based on these experiences, the USB K-Line Adaptor has been developed.